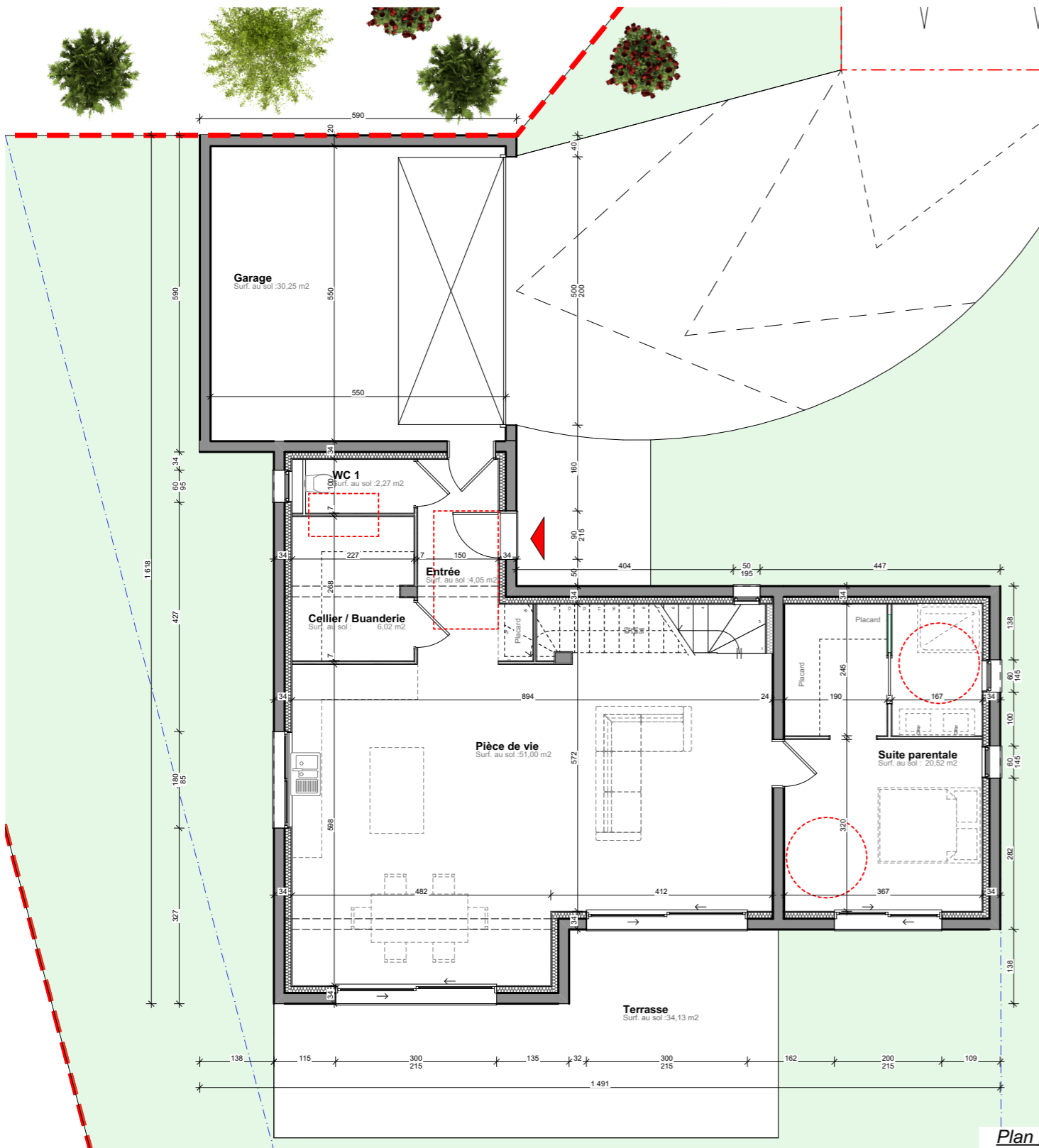
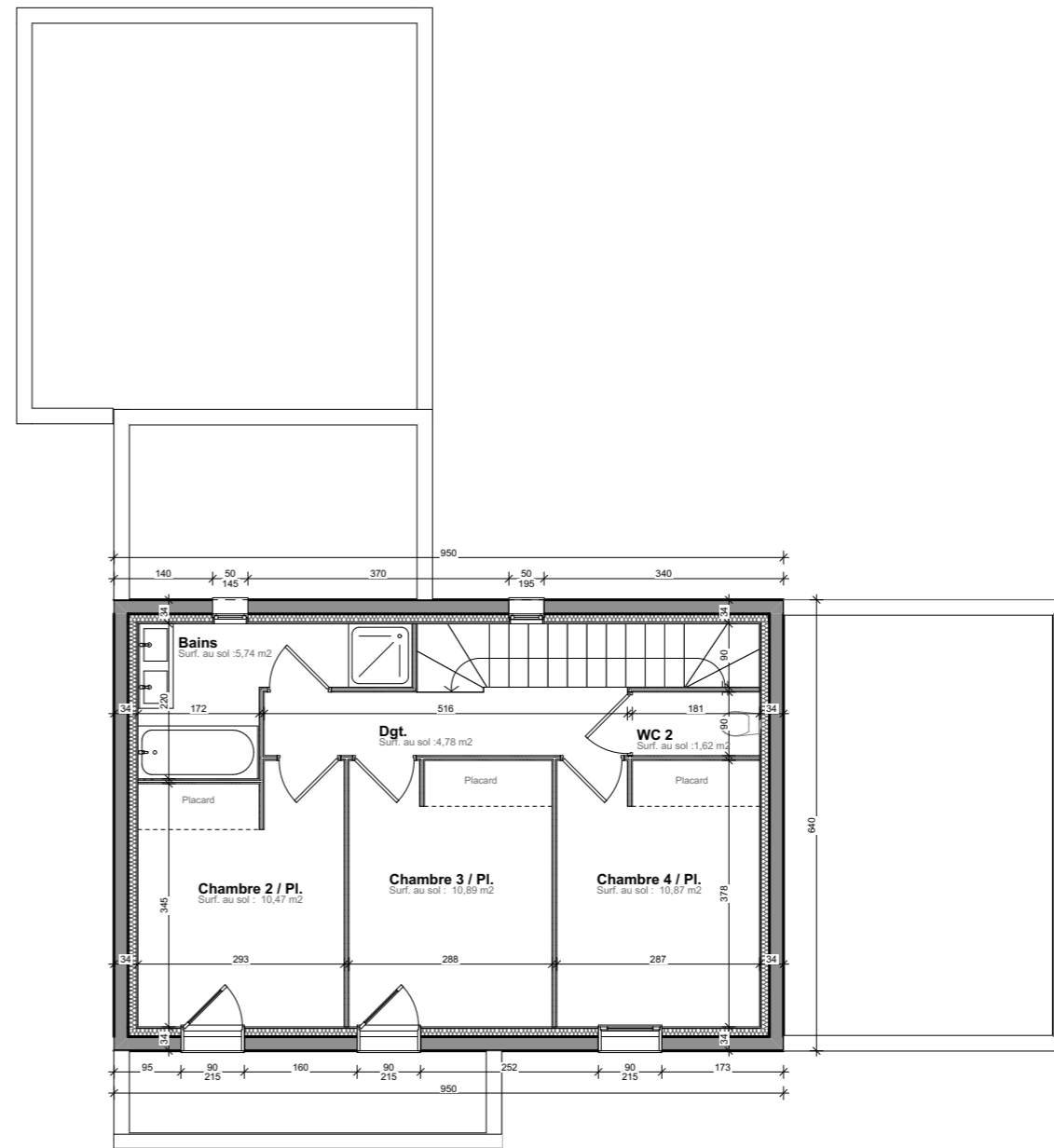


PLAN INTERIEUR PROVISOIRE

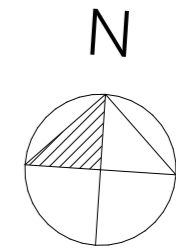


Plan Rez-de-Chaussée



Plan Etage R+1

VILLA T5 Lot 4	
Pièce de vie	51,00
Entrée	4,05
Cellier / Buand.	6,02
Bains	3,17
WC 1	2,27
Suite parentale	20,52
Rez de Jardin	87,03 m <sup>2</sup>
Ch.2 / PI,	10,47
Ch.3 / PI.	10,89
Ch.4 / PI.	10,87
Bains	5,74
WC 2	1,62
Dgt.	4,78
Etage	44,37 m <sup>2</sup>
<b>Surface habitable</b>	<b>131,40 m<sup>2</sup></b>
Garage	30,25 m <sup>2</sup>



**RAMPA Réalisations**  
**Construction de 4 logements**  
 Lieu-dit "Le Colombier" Malataverne, 26780  
 00 / Plan Villa 4 - T5  
 18/03/202 Echelle : 1:100

